



# The Warner Stand, Lord's Cricket Ground

St John's Wood, London

Project Case Study

Client: Alltech / BAM Construction

Installed: 2017



As part of the new Warner Stand at Lord's Cricket Ground, the living walls help to provide a stunning backdrop to the concourse and prestigious hospitality suites that they adorn.

## Project Brief

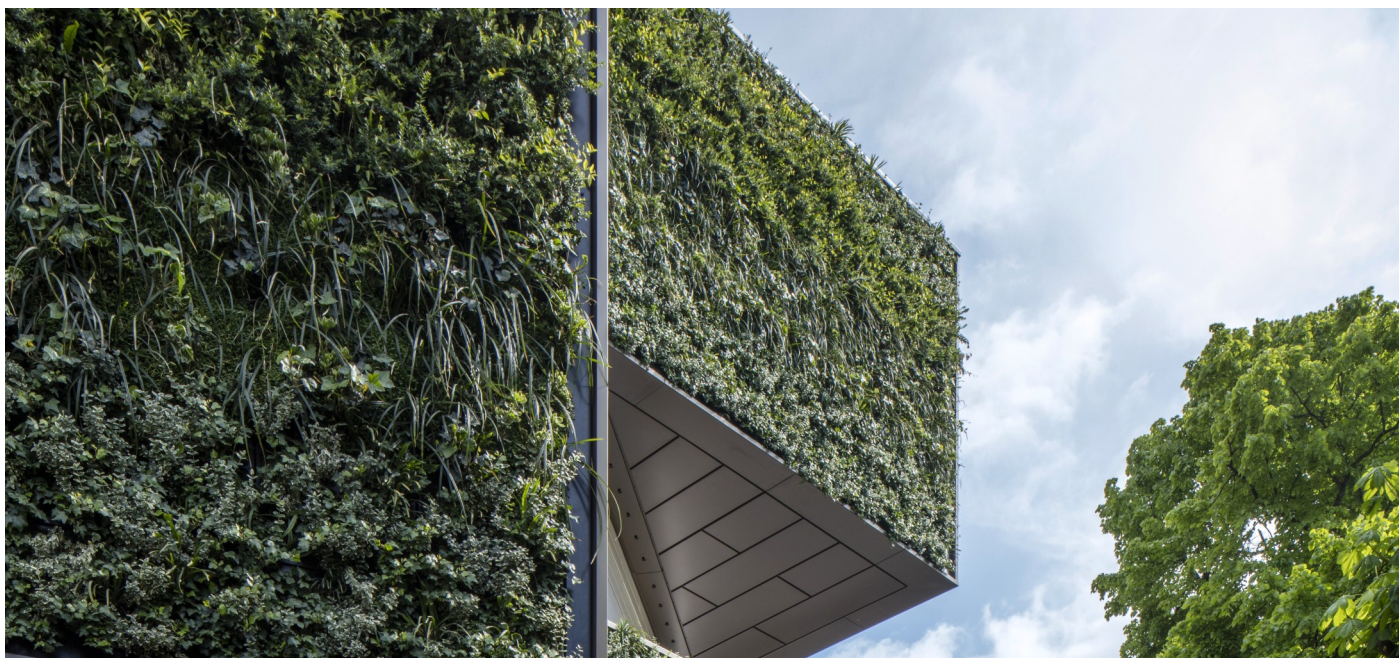
The client's brief on this project was for a visually unique wall that maintained a uniformity across the five separate sections to be installed on the Warner Stand. A curvilinear pattern that continues across the panels in horizontal sections was chosen.

The client was also keen to improve air quality and biodiversity so plants were selected with physiology in mind to assist with capture of particle matter: leaf size, shape and surface texture were taken into consideration, as waxy, hairy, rough and/or ridged surfaces are most effective in trapping particles. In addition some plants were chosen because they are native species that would be wildlife friendly.

Plants also had to be selected to suit the site conditions: the North West facing aspect means that the plants will be in partial shade and there is possible wind exposure, especially at the top of the fourth floor sections.

## Highlights

- ◆ Curvilinear planting design
- ◆ Five separate sections of living wall are unified by the planting design.
- ◆ Over 6,250 plants are growing in the living walls.
- ◆ North West facing aspect, with exposed conditions for the fourth floor sections.
- ◆ Installation took place on a live site.



### Our Approach

The redevelopment of the Warner Stand was undertaken by Main Contractor, BAM to a design by Populous Architects. We worked with Populous during the design phase to help to discharge the Planning Consent for the stand. The living walls were a large part of the planning strategy as a visual amenity mitigating the massing effect of the building.

The technical aspects of this project were exacting as the living wall had to seamlessly integrate with the other high end façade finishes of the building. We therefore coordinated our requirements fully with the Main Contractor and other Sub-Contractors including making sure the irrigation pipe runs were being properly managed along with all of the other services being run by the M&E Sub-Contractor.

Day one appearance was very important as the whole project had to be phased around the requirements of this live site. With completion in March 2017 we ensured that the plants were growing under glass in our nursery from Autumn 2016. This meant that from day one of installation the planting looked fantastic and complimented fully the corporate image of the prestigious new Warner Stand.

---

**Biotope cultivated six feature living walls at Lords, working on the prestigious Warner Stand. On a project with complex logistics and co-ordination, their flexibility was a pleasure to deal with. The end result is a delighted client as well as living walls which magnify the architectural intent.**

- Andy Lee, Site Manager | BAM Construction

---

