




# Biotecture

Enriching estates  
with living walls;  
Canary Wharf



## Canary Wharf Urban Greening, Phase One

-  **Client:** Canary Wharf Group
-  **Installation:** 2021
-  **Living Wall System:** PlantBox

Biotope delivered PlantBox living walls in six prominent locations across the Canary Wharf estate to enrich the public realm and contribute the client's ambitious sustainability goals.

Using our freestanding, stackable and modular system we were able to deliver a big impact within a short timeframe.



Urban Greening Plan; Gillespies



### Enriched Public Realm

This project was designed to bring nature back into Canary Wharf - Living walls have been proven to reduce stress and improve wellbeing.



### Biodiversity Net Gain

Living walls provide green corridors and habitats for insects, contributing to stronger ecosystems.



### Better air quality

Plants absorb CO<sup>2</sup> and other pollutants. Their leaves also intercept suspended particulate matter helping to improve local air quality



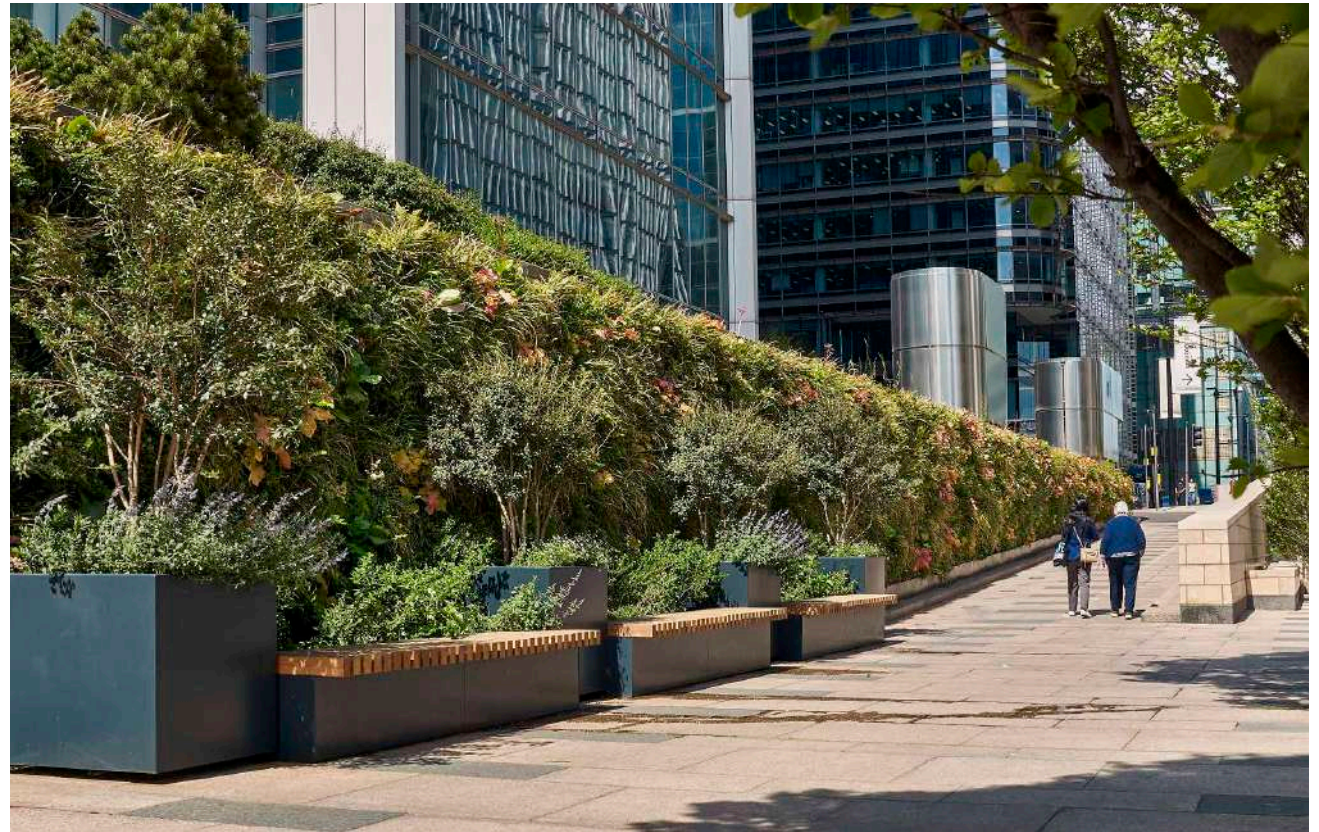
### Support the circular economy

This modular, stackable living wall system can be dismantled and re-located in the future





## Client Aspirations

Over the last 20 years London's Canary Wharf Estate has transformed from a derelict dockland into a thriving business centre and lifestyle destination. Canary Wharf Group (CWG), who own and run the Canary Wharf estate, understand that the world can't become sustainable unless cities start working with nature and they are working hard to play their part. CWG has an ambition to use the Estate as a living test bed, creating places where nature and people can thrive together.

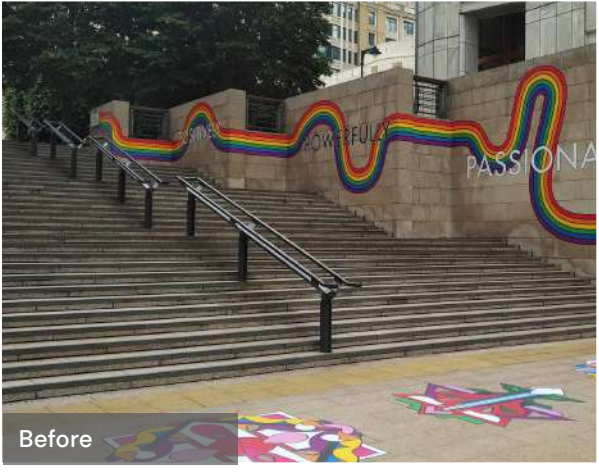
Biotecture were commissioned to contribute to that vision by delivering a number of living walls across the Canary Wharf estate to enrich the public realm and create a pleasant and relaxing environment for workers, residents, and visitors. The living walls at Canary Wharf will also help to improve air quality, attenuate rainwater, and increase Biodiversity.



## Project highlights

-  Freestanding, stackable and modular PlantBox system
-  Only required restraint fixings to the existing structure
-  Fast delivery – 8 weeks between initial visit and installation
-  3,000 PlantBoxes – 12,000 plants





Before



Cubitt Steps

## Our Approach

### Engagement

Canary Wharf Group appointed Landscape Architect Gillespies in 2021 to create a landscape framework for a large programme of landscaping works across the Estate.

Working in collaboration with Biotecture and Willerby Landscapes Gillespies established a vision and toolkit for each area including modular timber furniture, planters and green walls based on the site's location, character, climate and usage. The scheme was designed to enhance biodiversity, improve wellbeing and create enlivened spaces.

Canary Wharf Management then appointed Biotecture directly to design and install the living wall elements in six prominent locations across the estate.



Visual created by Landscape Architect Gillespies

### With you from start to finish



#### Design

Biotecture worked with CWG to design the PlantBox living walls across the estate



#### Horticulture

The living walls were planted up in our nursery before being transported to site



#### Installation

PlantBox is modular and easy to install. Our fully trained team installed the walls over several weeks



#### Maintenance

Our expert maintenance team have an ongoing contract to keep the living walls looking their best

## Our Approach

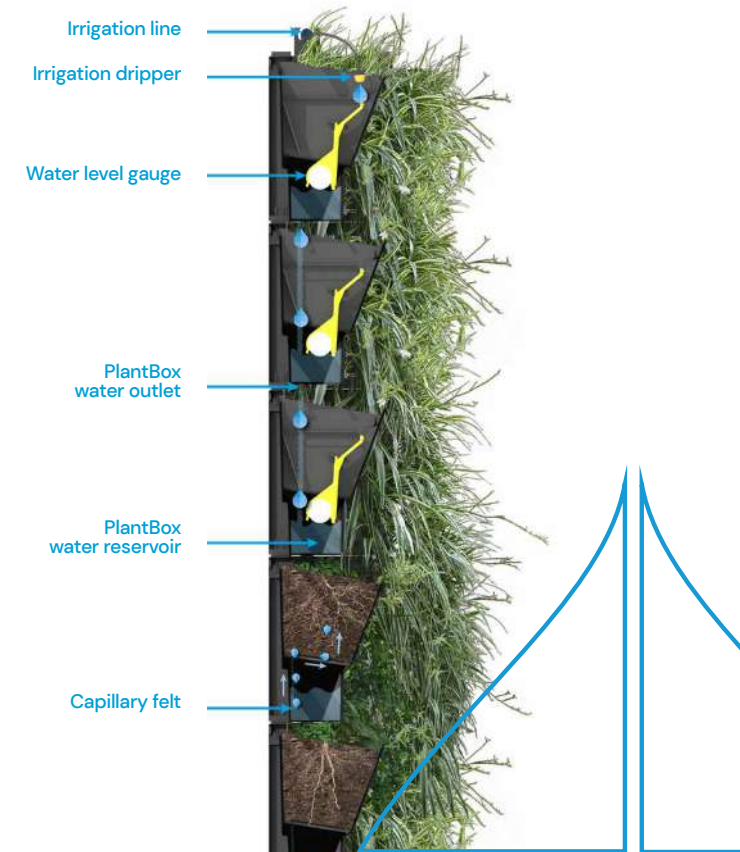
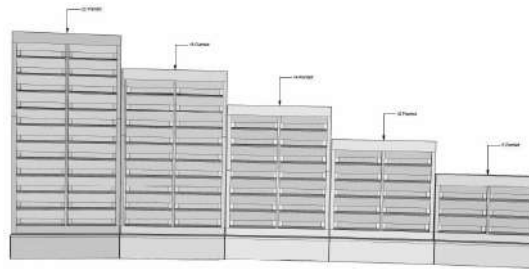
### Design and Project Management

The living walls were designed using our PlantBox system, which is freestanding, stackable and modular. Our project team created visualisations to ensure the client fully understood our proposals and what we could achieve.

Setting out drawings for each area were created and planting palette diagrams for our nursery and installation teams to follow.

The planting was designed to create a vibrant, natural feel while maximising ecological benefit and resilience to climate change. Plant species have been considered and combined to ensure seasonal and visual interest through form, colour, movement, and texture. The palette at each location has been shaped by specific conditions to create a distinct character and establish plant communities that are biodiverse, robust and well suited to their environment.

Our project management team worked with the client to ensure that the living walls were delivered to suit the overall site programme.



### Benefits of PlantBox



stackable,  
and modular



Easy to install,  
dismantle and  
re-assemble



Made in the  
UK from  
100% with  
recycled  
materials



Only requires  
restraint fixings

## Our Approach

### Horticulture

The PlantBox troughs were planted up in our nursery before being installed on site in several phases. This ensured the living walls looked great from day one.

### Installation

PlantBox could not be simpler to install, with each trough easily clicking and stacking together vertically, and clipping together horizontally to fit any space. It can be installed up to 8 metres in height.

The PlantBox system is loadbearing and only requires restraint fixings, this meant that the living walls at Canary Wharf didn't need structural approval which allowed us to offer a fast turnaround.

All our install teams are fully trained and certified. We are affiliated to a number of safety bodies and we carry out regular internal and external safety and environmental audits.



## Our Approach

### Maintenance

Canary Wharf Management appointed Biotecture to carry out ongoing maintenance. Our expert horticultural team carry out regular inspections and horticultural visits to keep the living walls looking their best.

Each PlantBox trough has a 1.8L water reservoir and capillary felt allows plants to draw up the water they need. The cascading overflow system allows the walls to be watered easily and avoids the risk of overwatering and water wastage. On larger projects irrigation systems can be integrated.

### Future Flexibility

As a modular system PlantBox can be extended, reconfigured or moved allowing flexibility for the future. Biotecture are also working on a design for biodiversity boxes which can be retrofitted into the living walls which will help clients contribute to biodiversity net gain.



Reuters Plaza



Integrated water reservoir



Overflow watering system



Tells you when to top up

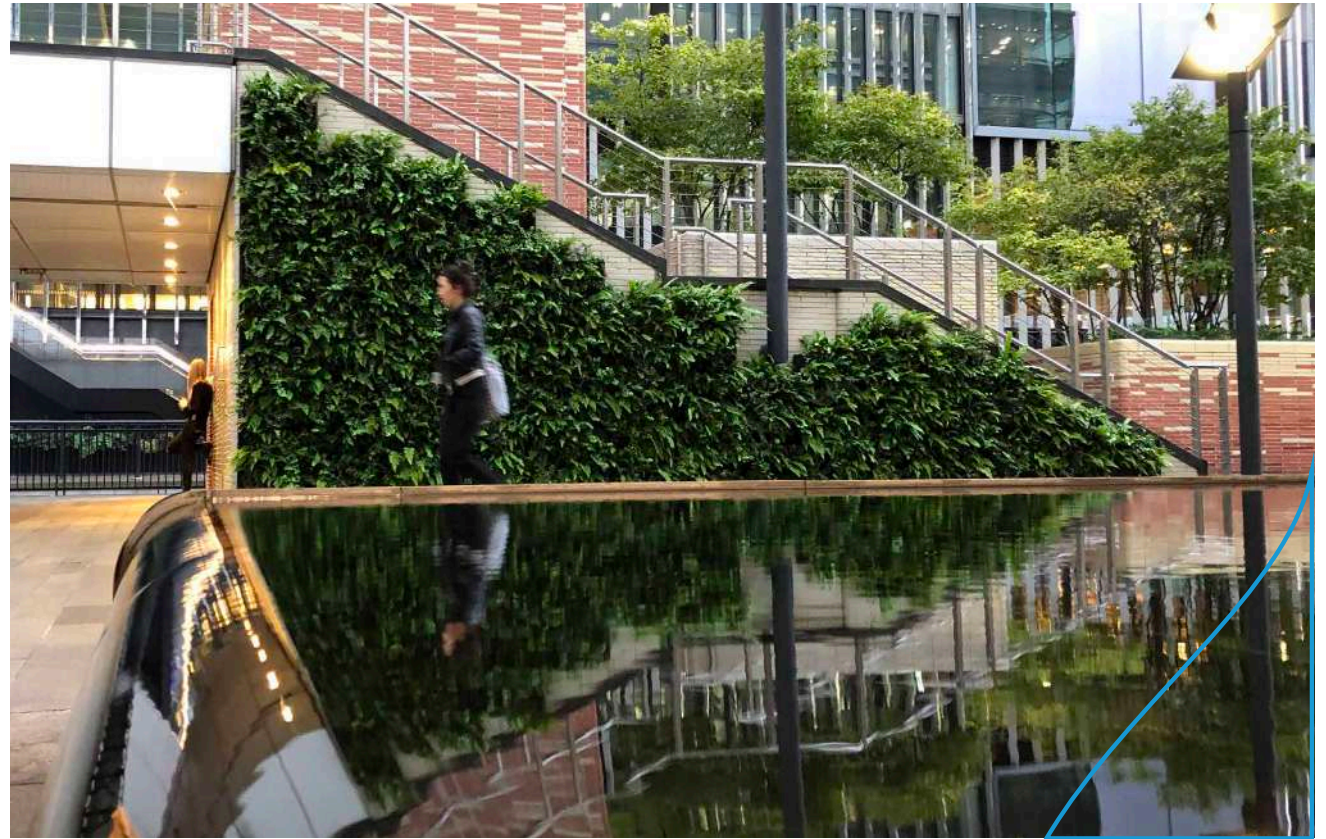
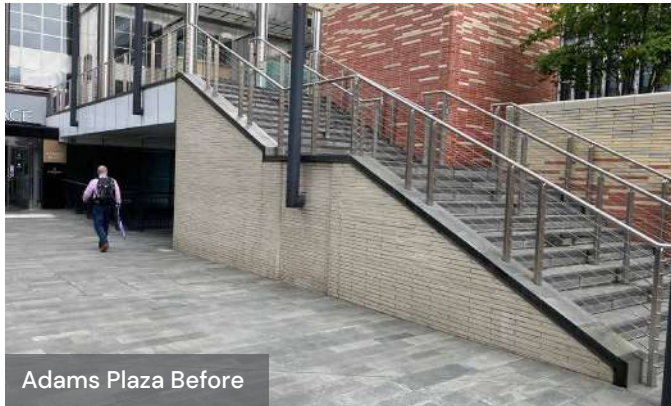




Before

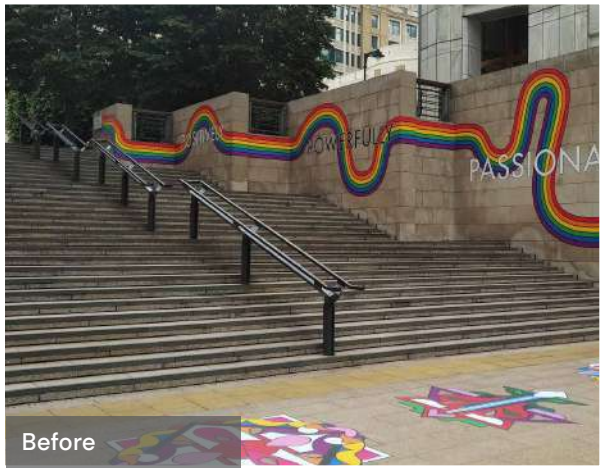


Cubitt Steps



“ All works by Biotecture were completed in a professional and timely manner and we are extremely pleased with the final results and we have had so much positive feedback from colleagues’ and Tenants’. Thanks for a great job.

Paul Griffiths, Landscape Manager, Canary Wharf Group





+44 (0) 1243 573 118  
enquiries@biotecture.uk.com

[www.biotecture.uk.com](http://www.biotecture.uk.com)

**Head Office:**

Unit 12, Broadbridge Business Centre  
Bosham, West Sussex  
PO18 8NF

**London Office:**

Unit 5, Coach House Mews  
217 Long Lane  
London  
SE1 4PR

