



McArthurGlen Paris–Giverny Designer Outlet

Giverny, France

Client: McArthurGlen

Installation: 2023

Living Wall System: BioPanel



Building on the success of our previous work at the McArthurGlen Designer Outlet in Ashford, we were appointed to design and install living walls at the heart of McArthurGlen’s new Outlet near Paris.

Biotope worked collaboratively with the design team and contractor from an early stage to deliver the client’s vision.

The planting design was a collaboration with living wall pioneer and renowned botanist Patrick Blanc.

After successfully completing living walls at the McArthurGlen Designer Outlet in Ashford, we were approached to design and implement a similar scheme for McArthurGlen’s newest outlet on the outskirts of Paris.

This development exemplifies McArthurGlen’s commitment to sustainability. The scheme was built according to ‘Excellent’ High Environmental Quality (HQE) standards and includes 20,000 square metres of green roofs, 1,000 square metres of living walls and 120 electric parking spaces.

The architect wanted to create a ‘rich and welcoming experience’ for visitors and the living walls contribute to that vision. At the heart of the development lies a central ellipse, adorned with two gracefully curved stretches of Biotope’s living cladding, each spanning an impressive 90 metres in length and standing at a height of 11 metres. Two more expansive sections of living wall frame the east entrance.

The living walls are a visually striking architectural feature and help to cultivate a serene shopping environment. In addition to their aesthetic contributions, the plants walls will play a vital role in improving air quality and promoting biodiversity within the outlet.

Highlights

- ⇒ Over 1,000m² of living walls featuring rainscreen cladding
- ⇒ High-profile project showcasing expansive and impactful living walls
- ⇒ Careful detailing to fit around curved windows.
- ⇒ Designed to mitigate air pollution and contribute to biodiversity net gain
- ⇒ Planting design by living wall pioneer and botanist Patrick Blanc
- ⇒ 40 different plant varieties
- ⇒ Remotely monitored irrigation system.



Our Approach

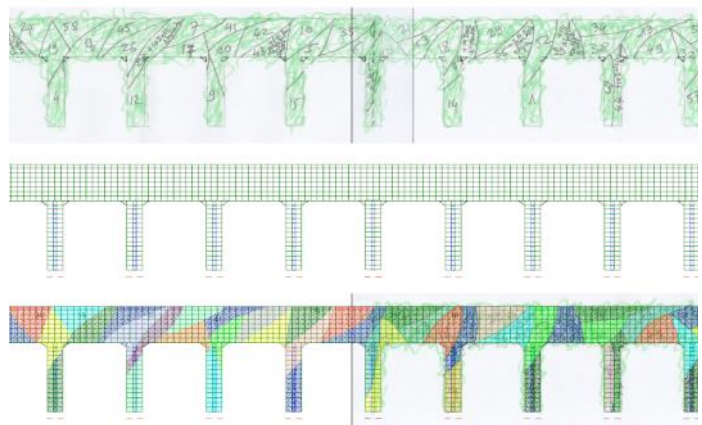
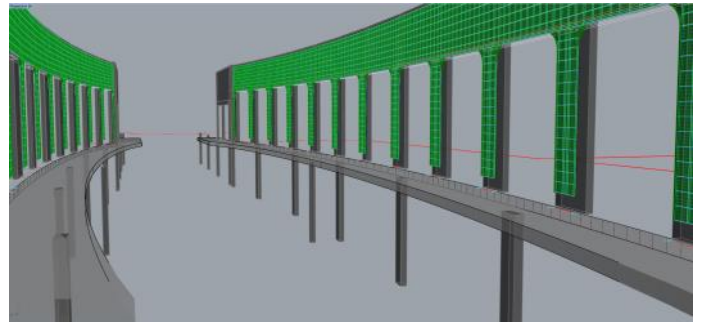
Design and Project Management

Our BioPanel living wall system acts as the rainscreen cladding of the building. We worked closely with the design and project management team to ensure the living walls were seamlessly integrated into other aspects of the design. This included careful layout of the living wall panels to compliment the gently curved facades and curved window openings on the main ellipse.

Planting Design

A crucial part of the design process for the living walls was the planting selection and design. We collaborated with French living wall pioneer and renowned botanist Patrick Blanc. Patrick chose 40 different species including flowering plants such as Erysium, Lavandula, and Jasminum to create living walls that would be full of colour and variety.

Each 600 mm x 450 mm BioPanel includes 16 plants allowing us to pack in 60 plants per square metre. Our design team translated Patrick's concept into a planting diagram which was carefully followed by our nursery and install teams to bring the scheme to life.





Horticulture

Biotechture's hydroponic living walls are 'pre-grown' into our own patented BioPanel modular panels at our dedicated nursery facility in West Sussex, where we have over 3,000 sqm of purpose-built vertical racks. The panels were planted up in phases ready to be installed on site.

Installation

Our BioPanel system forms an integral part of the building fabric. The first fix included the installation of backing boards and aluminum mounting rail as well as the installation and commissioning of the irrigation system. The second fix was the installation of planted panels, which slot in between the aluminum mounting rails.

Maintenance

As part of the project, an integrated irrigation system has been installed, which is remotely monitored by our team from our office in West Sussex. This advanced system ensures that the plants receive the necessary water and nutrients for their well-being and growth. Additionally, regular horticultural maintenance visits will be conducted to ensure that the living walls are meticulously maintained and continue to look their best.

Project Team

Architect: [Arte Charpentier](#)

Main Contractor: [Eiffage Construction](#)

Project manager: [TERRELL](#)



enquiries@biotechture.uk.com

+44 (0)1243 572118